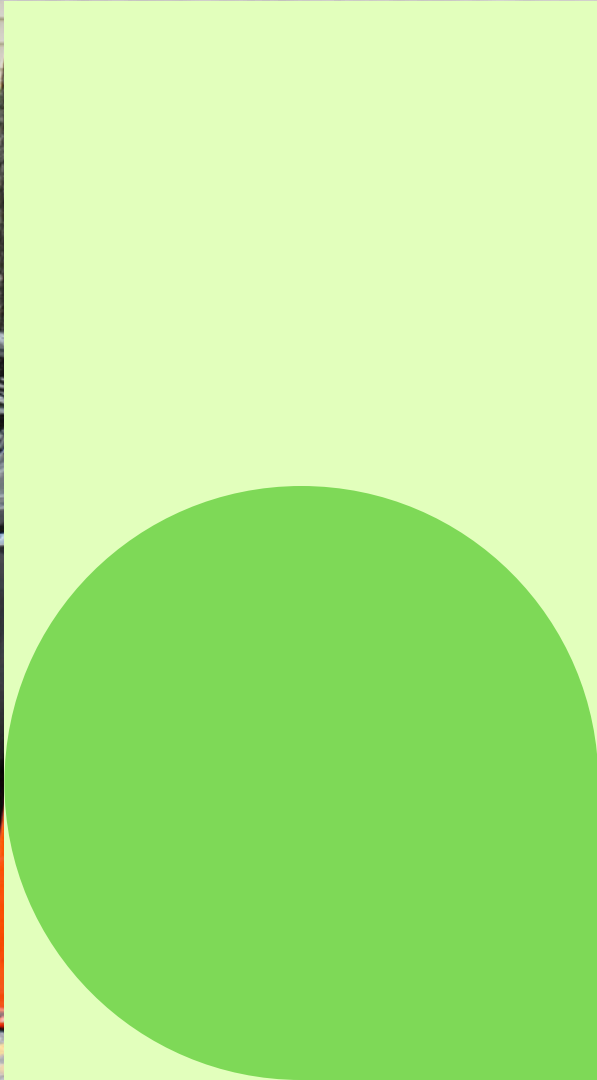
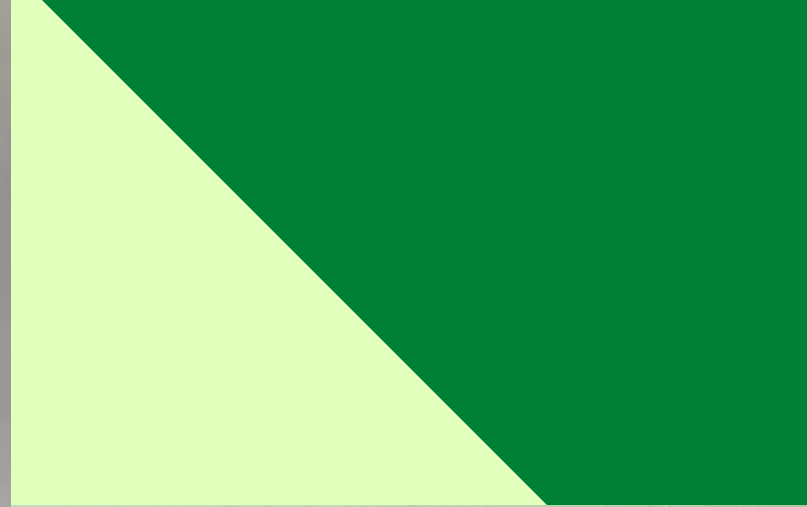
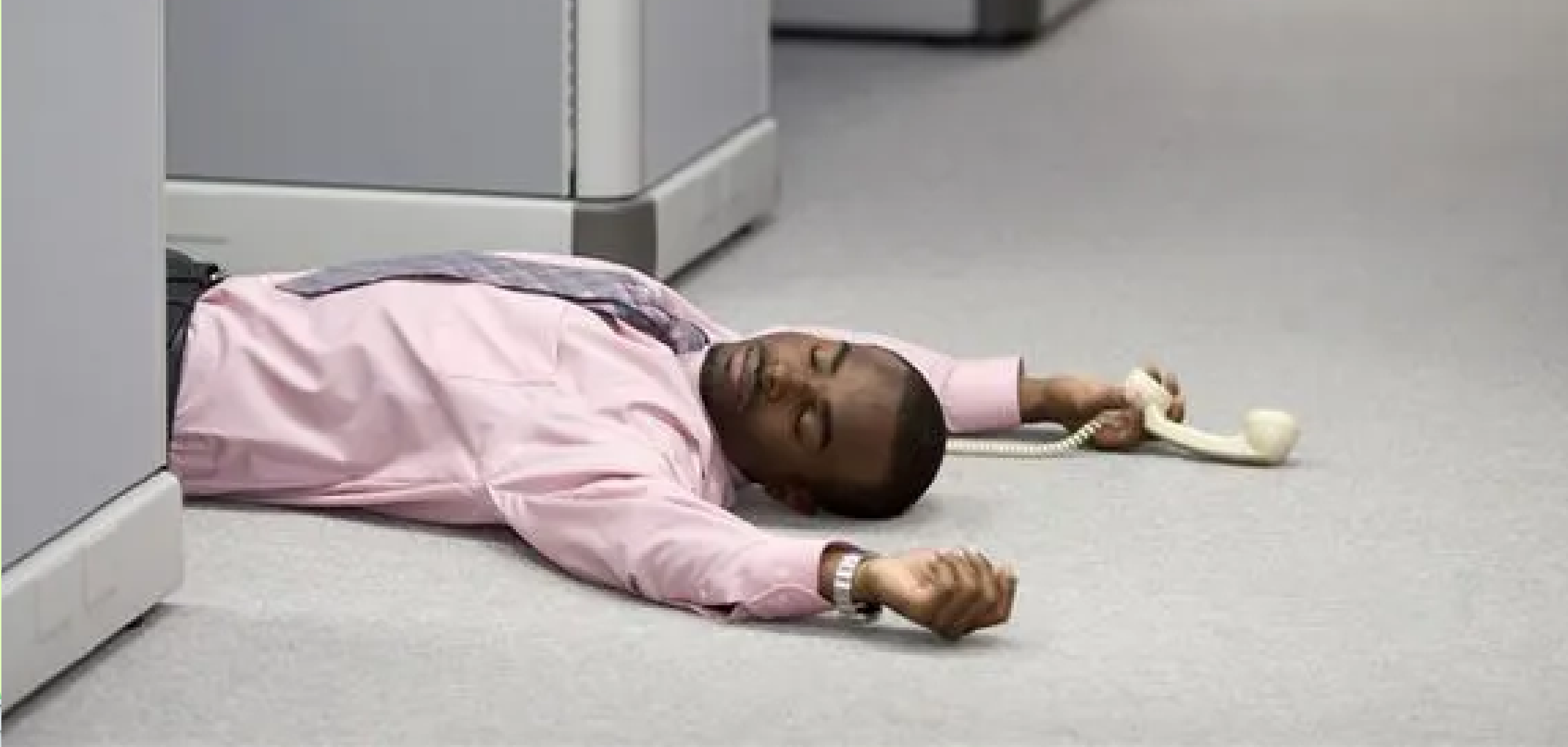
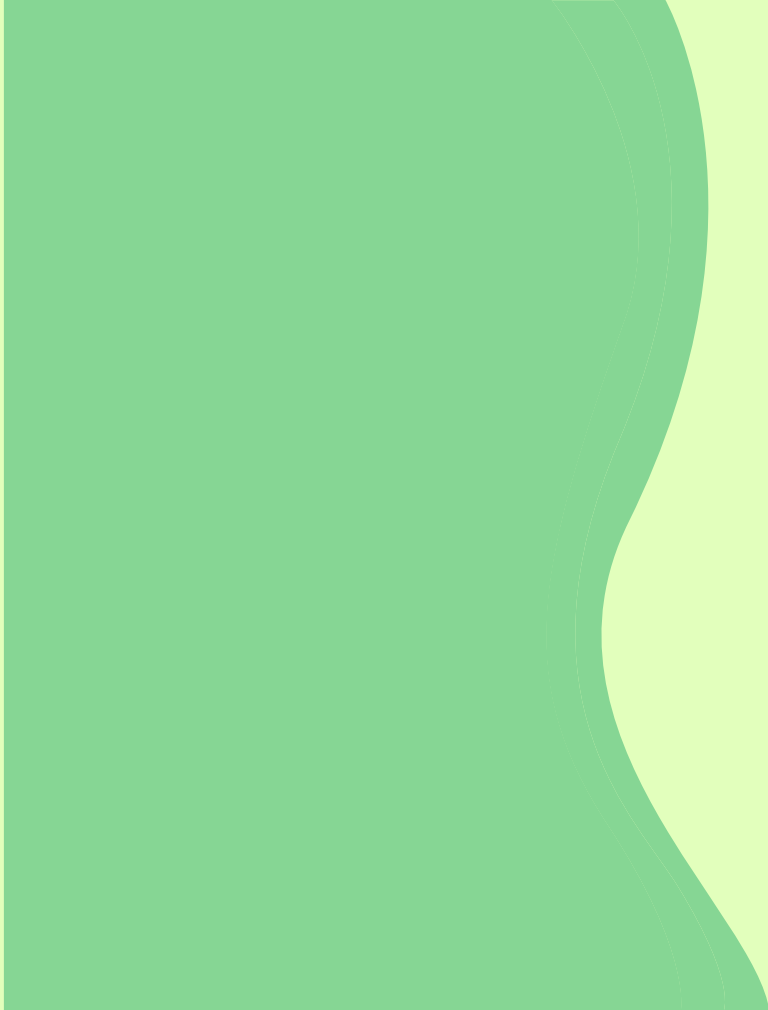


**BE STROKE
SMART**



**STAY STROKE
SMART**

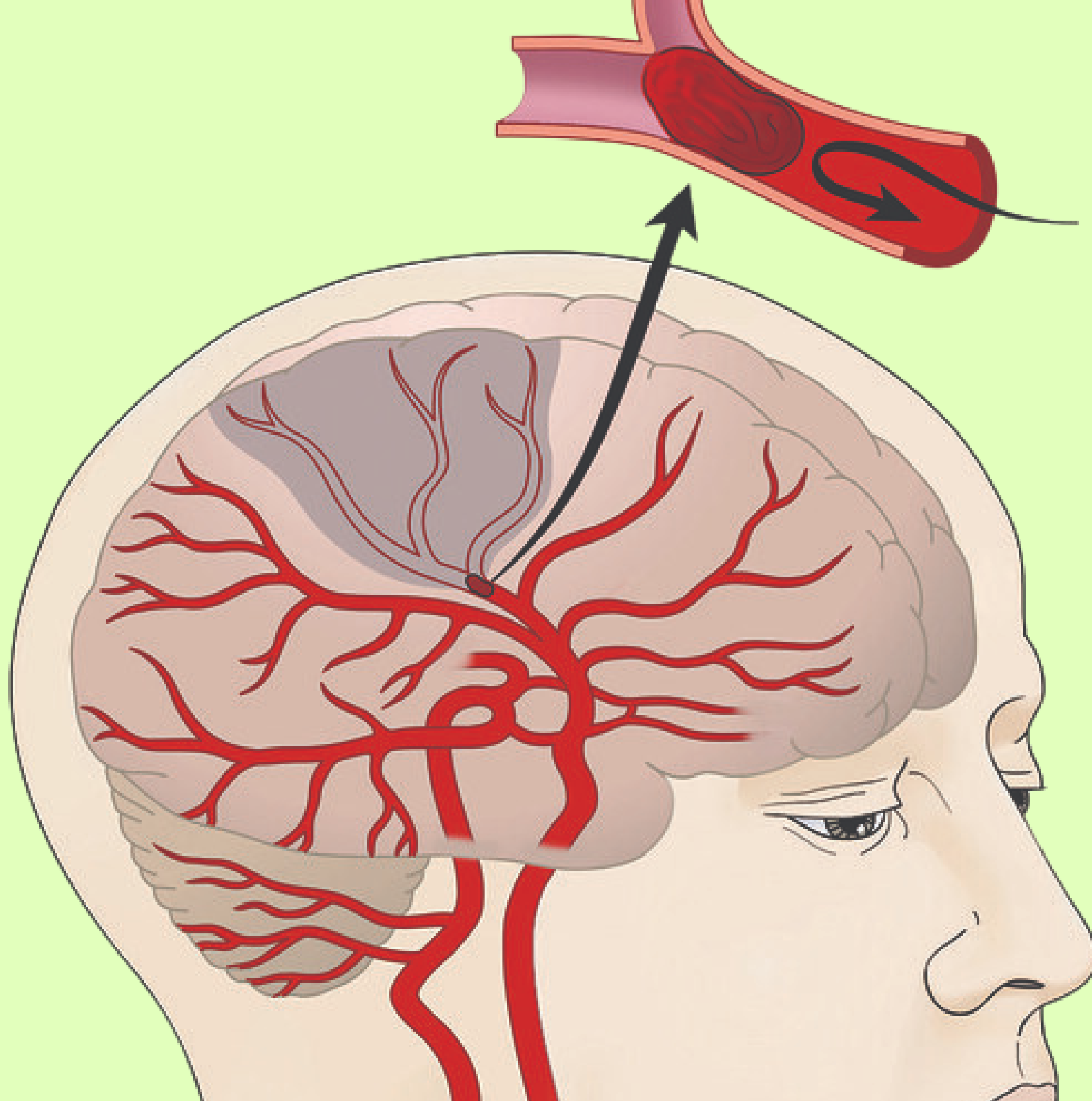






Leading Cause of
Disability

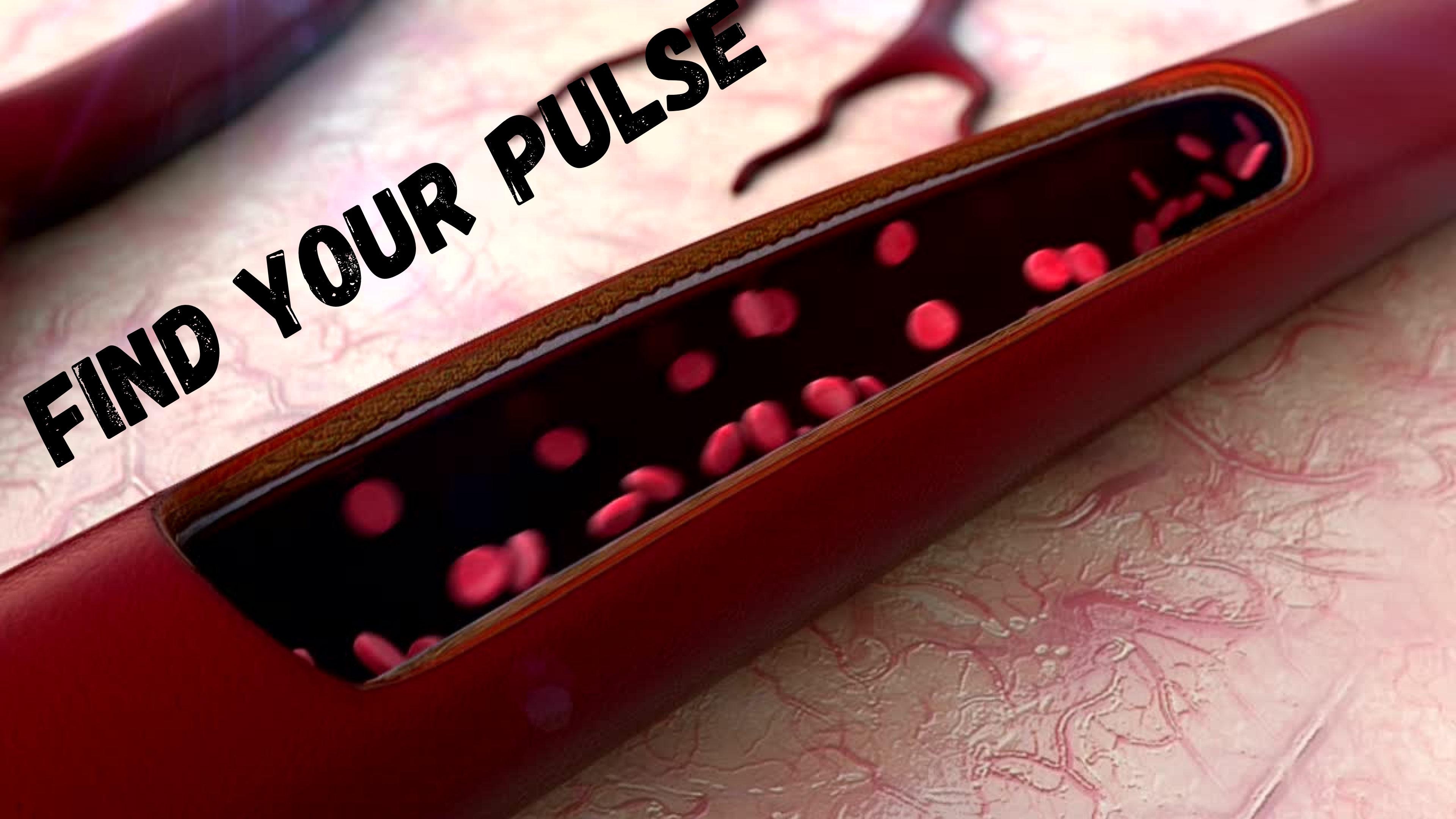
STROKE

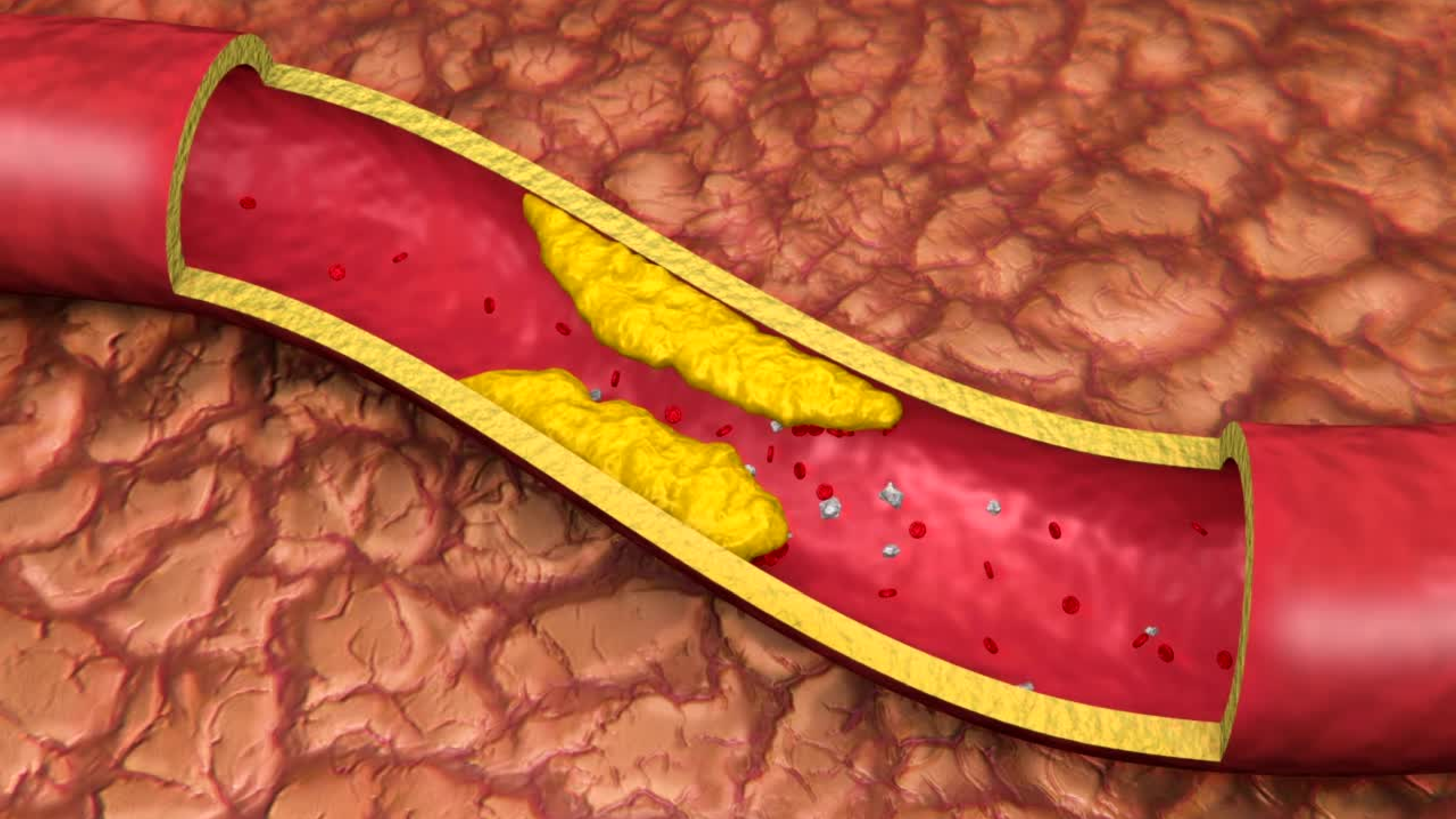


**Blood flow to
brain tissue is
blocked.**

**Brain damage
begins.**

FIND YOUR PULSE





Spot a Stroke



Spot a Stroke

A



B



Spot a Stroke!

Sudden, Unexplained Signs

Facial drooping

**Difficulty understanding
or forming words**

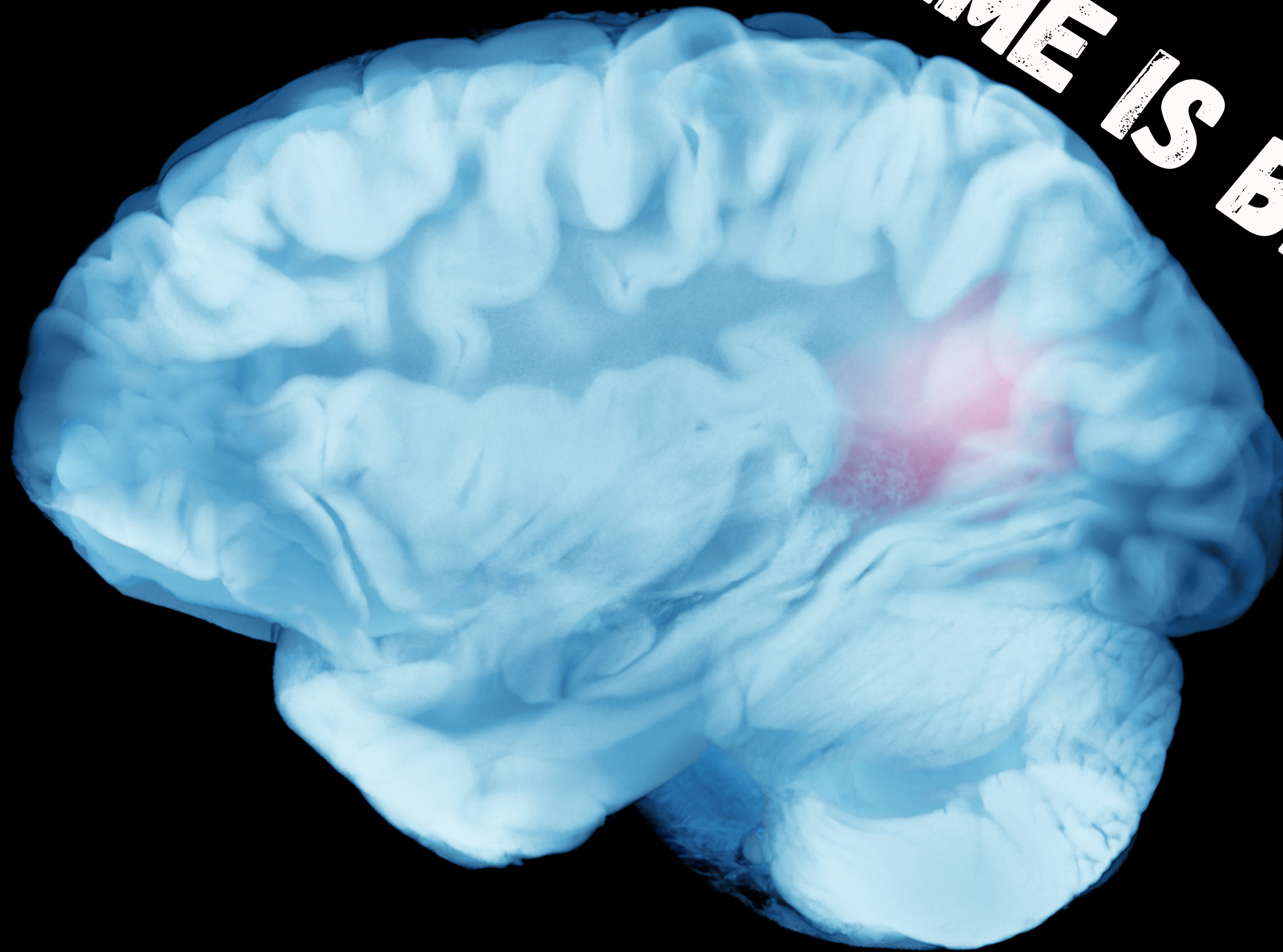
Loss of balance/dizziness

Body weakness on one or both sides

Vision changes

Confusion





TIME IS BRAIN

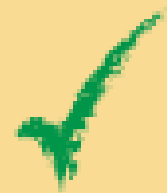
Call 9-1-1



Roughly 90% of patients arrive AFTER the window to administer effective medication closes.

Spread the Word!

STROKE SIGN TEST: SMILE



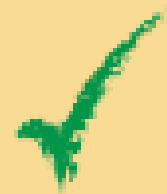
Pass



Fail **CALL 911**

One side droops.

STROKE SIGN TEST: RAISE ARMS



Pass



Fail

Arm drifts downward.

CALL 911

Stroke Smart

OTHER STROKE SIGNS

SUDDEN TROUBLE:

- Speaking or Understanding
- Walking or Balance
- Seeing
- Weak or Numb on one side of body



Fold and keep in your wallet

CALL 911 for even ONE SIGN,

CALL 911 even if SIGNS STOP

Stroke Smart **VIRGINIA**

Kwikpoint 

Copyright © 2022

Be a Stroke Champion



nvems.org

Call 9-1-1



**Time is
Brain**

